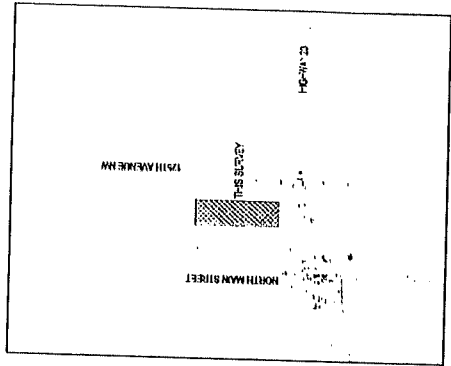
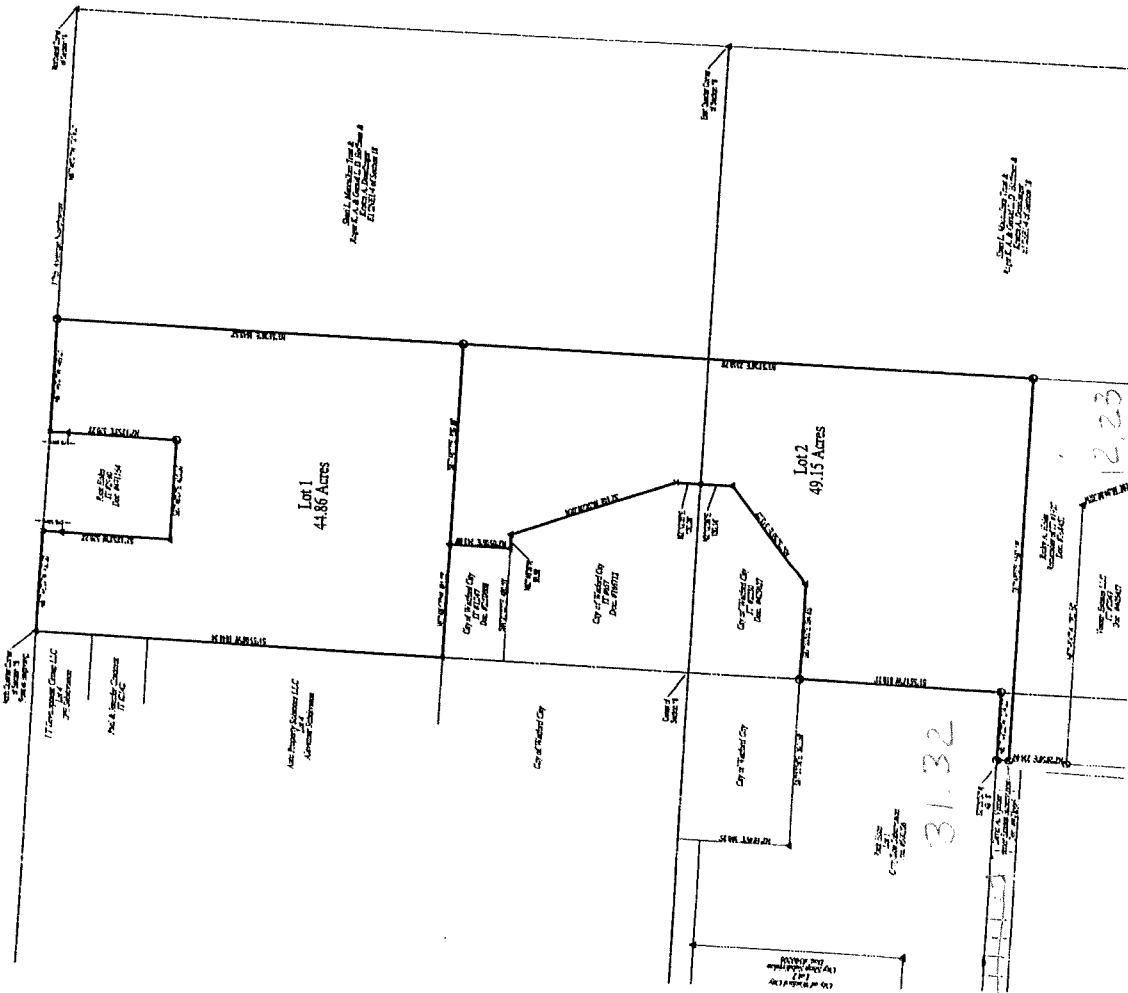


**PLAT OF
LOTS 1 & 2 OF BOOMER'S SUBDIVISION**
 AS LOCATED IN THE W1/2E1/2 OF SECTION 18
 TOWNSHIP 150 NORTH - RANGE 98 WEST - 5TH P.M.
 WATFORD CITY, MCKENZIE COUNTY, NORTH DAKOTA



VICINITY MAP
Not to Scale



SCALE 1" = 200'

BASE OF BEARING: N.D. STATE PLANS - NORTH 2011'S
GROUND DISTANCES SHOWN: OF 0.000041

- = REBAR & CAP SET
- ▲ = PIN POINT
- = STAKE/POIN
- ✕ = STAKE NUMBER
- ✕ = COMPUTED
- = ADJACENT PLAT
- = SECTION LINE
- = QUARTERLINE
- = PROPERTY LINE
- = SIXTEENTH LINE

